

2" STING

2" STING is the first and at the moment the only IBO 2" deep well displacement pump. The diameter of the pump does not exceed 53 mm and the hydraulic section consists of the stator, rotor and clutch. The pump is mainly made of stainless steel. The pump is equipped with a 14 m cable terminated with a plug and the capacitor is built into the motor so that pump is ready for installation immediately after unpacking. The pump is equipped with thermal protection mounted in the motor winding.

APPLICATION:

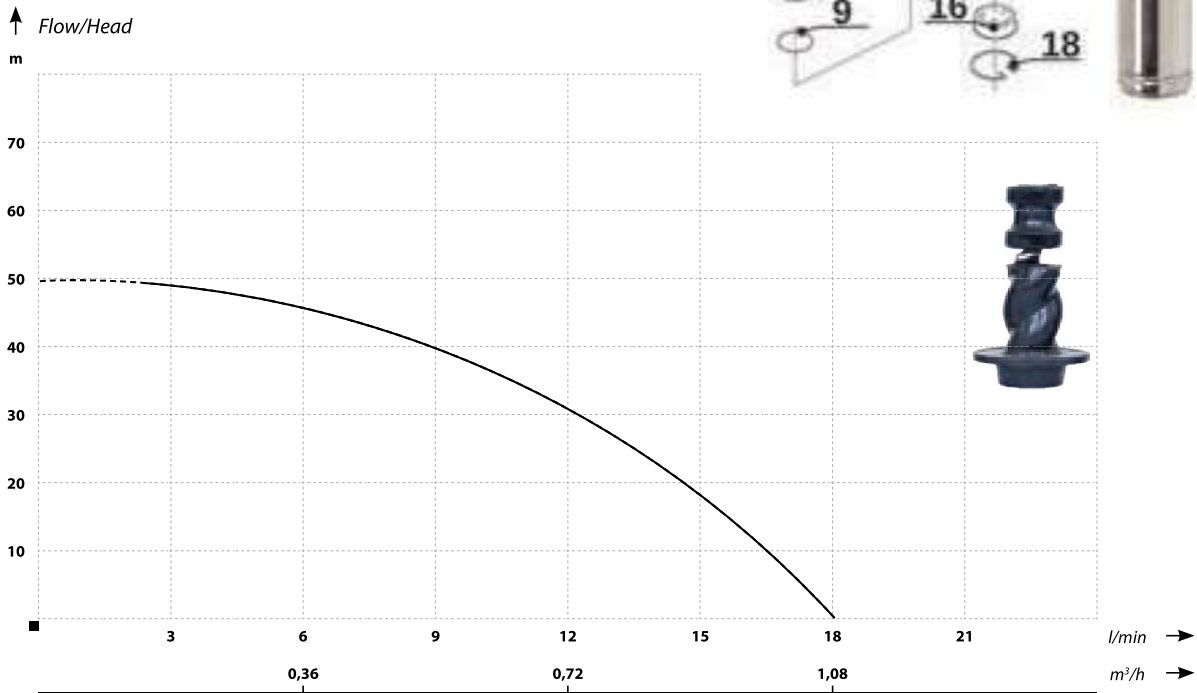
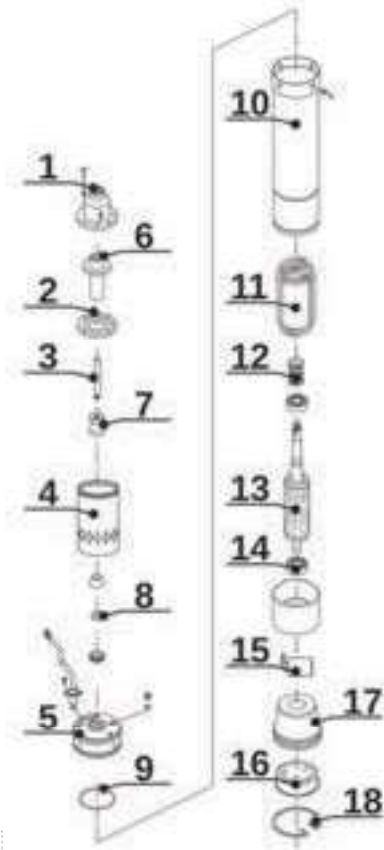
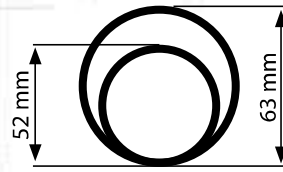
Supply of water from deep wells to small single-family houses and recreational plots. The pump can be used by companies providing hydro-geological services.

OPERATING CONDITIONS:

- Maximum liquid temperature 40°C Maximum ambient temperature 40°C
- Class B Insulation
- Operating mode - continuous
- Protection - IP68

MATERIALS:

- Housing: stainless steel AISI 304
- Shaft and rotor: stainless steel AISI 304
- Screw: stainless steel AISI 304
- Stator: NBR
- Motor: oil cooling
- Mechanical seal: ceramics/Sic
- Rotational speed of the electric motor: 2850RMP



PARAMETERS

Name	Head (m)	Flow (l/min)	Motor power (W)	Voltage (V)	Amperage (A)	Inlet/outlet (inch)	Dimensions Dia/H (mm)	Weight (kg)
2" STING	50	18	370	230	1,8	½	52/690	11